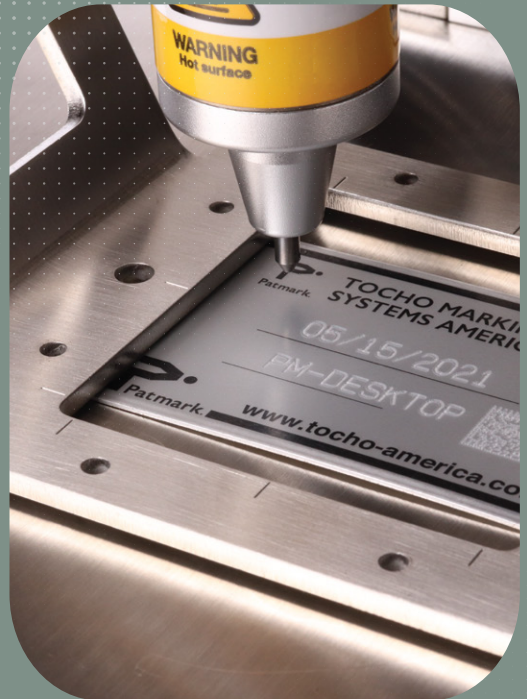
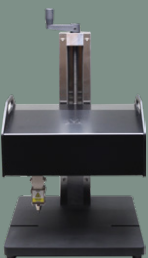
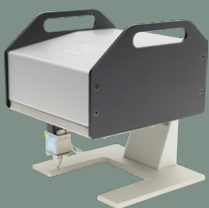


ADAPTABILIDAD

CONECTIVIDAD

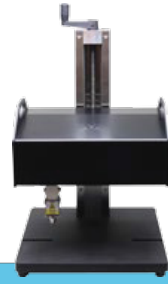
VERSATILIDAD

# MARCADORAS MICROPERCUSIÓN



- METAL
- HIERRO
- ALUMINIO
- INOXIDABLE
- Y OTROS
- PLÁSTICO
- ABS
- PA
- PES
- PP
- MADERA

marketing@markinbox.mx



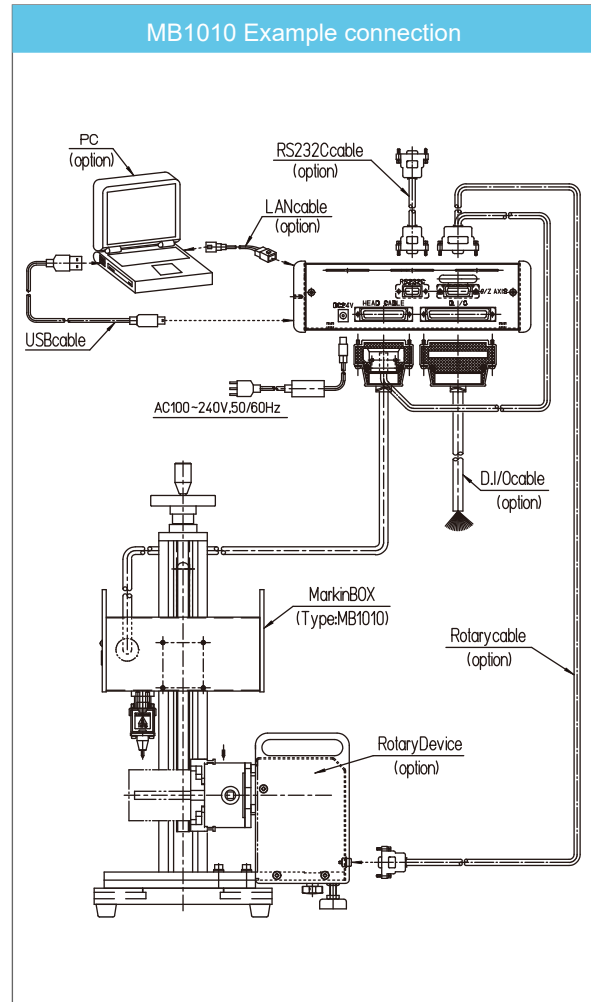
	MB2S-3315S	MB2S-8020S	MB2S-1010	MB2S-2015
Working area	Xaxis 33mm (1.3") x Yaxis 15mm (0.6")	Xaxis 80mm (3.1") x Yaxis 20mm (0.8")	Xaxis 100mm (4") x Yaxis 100mm (4")	Xaxis 200mm (8") x Yaxis 150mm (6")
Cable length	3M (10')	3M (10')	2M (6')	2M (6')
Dimensions	116mm (4.6") x 73mm (2.9") x 190mm (7.5")	173mm (6.8") x 83mm (3.3") x 214mm (8.4")	200mm (7.9") x 217.5mm (8.6") x 228mm (9")	308mm (12") x 269mm (10.6") x 249mm (9.8")
Weight	1.5kg (3.3lbs)	2.1kg (4.6lbs)	4.5kg (9.9lbs)	6.3kg (13.9lbs)
Standard post dimensions	220mm (8.7") x 300mm (11.8") x 573mm (22.6")			310mm (12.2") x 370mm (14.6") x 544mm (21.4")
Standard post weight	7kg (15.4lbs)			10.7kg (23.6lbs)

	MB2S Controller
Power	AC100V ~ 240V 50/60Hz
Dimensions	66mm (2.6") x 144mm (5.7") x 217mm (8.5")
Weight	1.4kg (3.1lbs)
Connectivity	USB / RS232C / LAN
D.I/O	input 12 pins / output 8 pins Save up to 255 files

## sketchbook2 Specification table

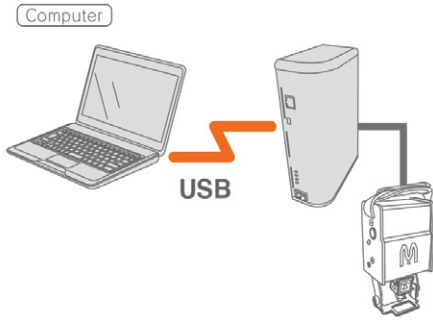
OS	Windows 7 or higher
Operating environment	Memory 1 GB or more, monitor resolution 1280 x 768 or higher
Corresponding model	MB3315S, MB8020S, MB1010, MB2015
Settable character height	0.1 mm or larger (0.1 mm pitch) to maximum Y value
Settable character width	Character height x 1% ~ 200%
Horizontal character pitch	0.1mm~
Fonts	[Original MarkinBOX fonts] MB font, Elegant font, 5x7 font * Including alphanumeric characters, hiragana, katakana, miscellaneous symbols ----- [PC fonts] * PC fonts are valid only when a PC is always on
Logos	JPEG, BMP data are read and registered on the creation screen ----- Automatic conversion of DXF data ----- * Straight lines, circles, ellipses, polygons supported
Serial marking	00000001 ~ 99999999
Calendar marking	Year, month, day, hours, minutes, seconds, Julian dates
2D codes	Data matrix, QR code
Number of creation fields	Up to 50 fields
Barcode reader	Automatic marking of data from barcode reader
File communication	Up to 255 files can be sent to the controller
Password functions	Two-level password setting (administrator/user)
Others	Drawing editing functions supported

Note: Specifications can be changed without prior notice for quality improvement.



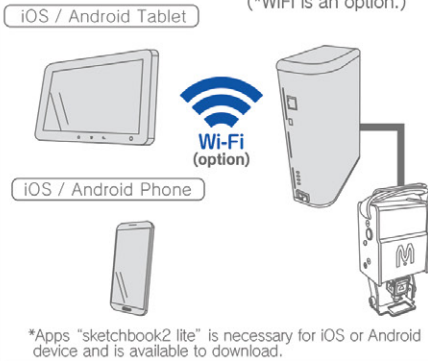
Todos los sets incluyen: Cabeza de Marcado, Cable AC, Cable Pines(3m), Cable USB, Programa SketchBook, Controlador, 1 Pin standard 120

① USB communication

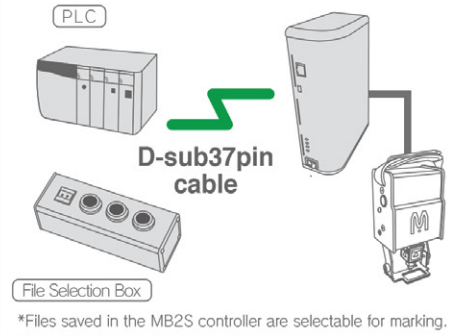


El módulo WiFi no viene incluido de fábrica

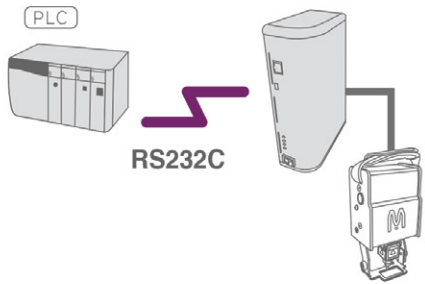
② Handheld device communication (\*WiFi is an option.)



③ D.I/O communication

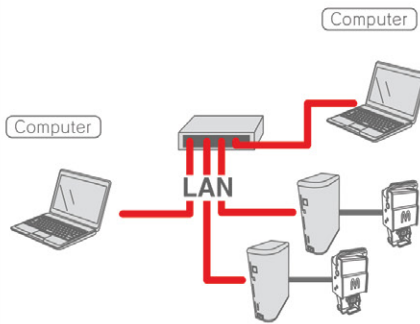


④ PLC communication

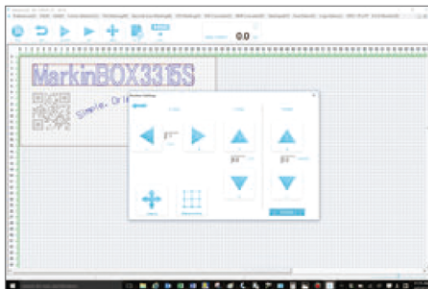
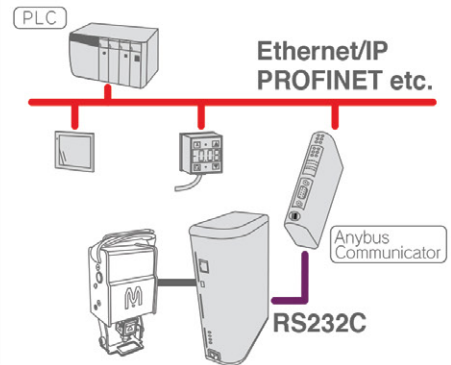


\*The special program in PLC is necessary for this communication.

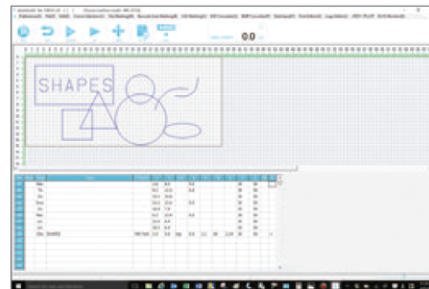
⑤ Network communication



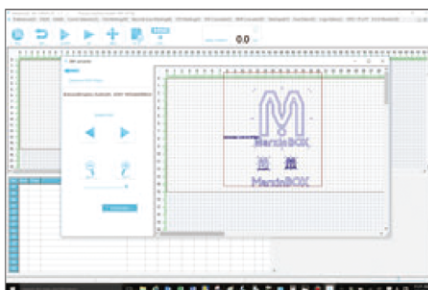
⑥ Fieldbus Communication



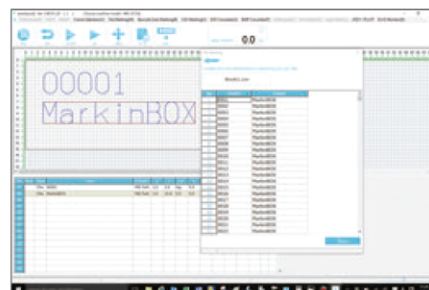
Sense of free drawing on paper and intuitive operation using icons; PC fonts also can be marked as they are.  
\*PC fonts are supported only when a PC is connected.



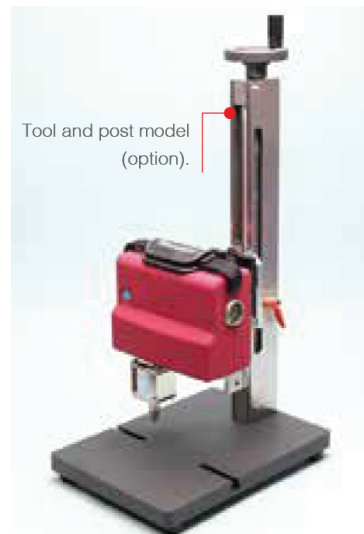
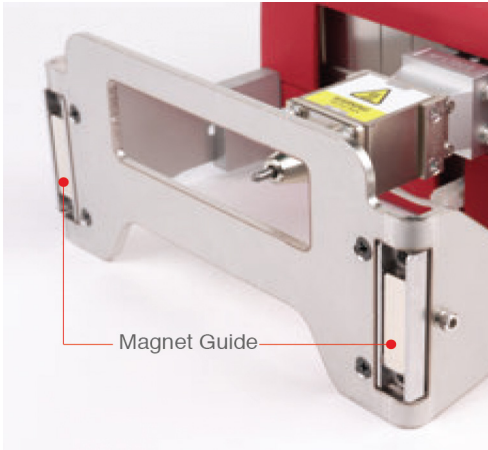
Rectangles, circles, straight lines, ellipses, triangles and other figures can be drawn using shape icons; thus simple markings can be easily created and marked.



Automatic conversion of DXF data is standard included; input data can be automatically converted into MarkinBOX marking data.  
\* Straight lines, circles, ellipses and polygons are supported; splines and letters are not supported.



CSV marking is included as a standard; Excel (CSV format) and other databases can be retrieved with one click.



El accesorio BIG SOLENOID llega a una profundidad de hasta 0.5 mm, dependiendo del material  
\*El Standard llega hasta 0.3 mm

